

THE
SPORTSMAN'S
GALLERY, LTD.SM & PADEREWSKI
fine art

Volume XXVIII





Eleinne Basa ~ *Last Light Yellowstone* ~ oil on panel ~ 8" x 16"

PADEREWSKI FINE ART & THE SPORTSMAN'S GALLERY, LTD.

BEAVER CREEK • 158 Plaza • P.O. Box 6850 • Beaver Creek, Colorado 81620 • 970-949-6036

CHARLESTON • 165 King Street • Charleston, South Carolina 29401 • 843-727-1224

NASHVILLE • 3706 Hillsboro Pike, B • Nashville, Tennessee 37215 • 615-516-9766

FRONT COVER:

Philip R. Goodwin (1881-1935)

A Golden Opportunity

oil on canvas ~ 24" x 33 ½"

signed lower right

SportsmansGallery.com | PaderewskiFineArt.com



Sue Key
Double Date - acrylic on linen - 24" x 36"



Manfred Schatz (1925-2004)

Pheasants ~ oil on canvas ~ 31 ¾" x 35 ½" ~ signed lower left



Peggy Watkins
King of the Road - oil on linen - 20" x 30"



George Browne (1918-1958)

Ringnecks I - oil on canvas - 12" x 16" - signed lower right



George Browne (1918-1958)

Ringnecks II - oil on canvas - 12" x 16" - signed lower right



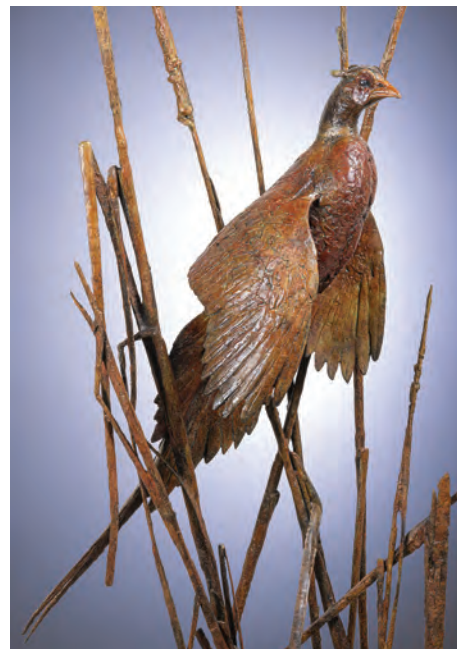
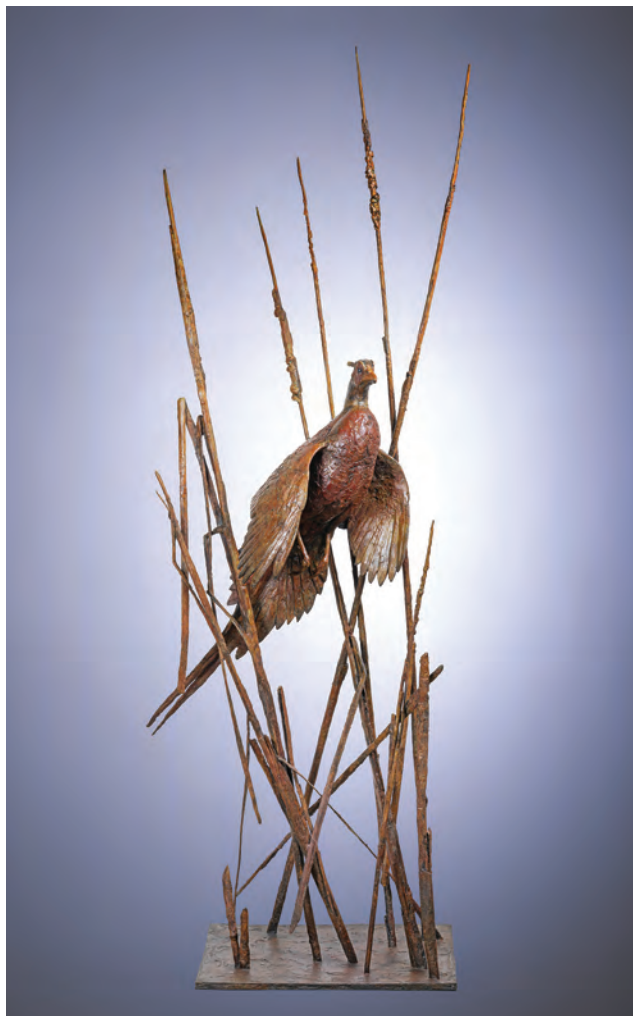
Lynn Bogue Hunt (1878-1960)

Flushing Pheasants ~ oil on canvas ~ 20" x 27" ~ signed lower right

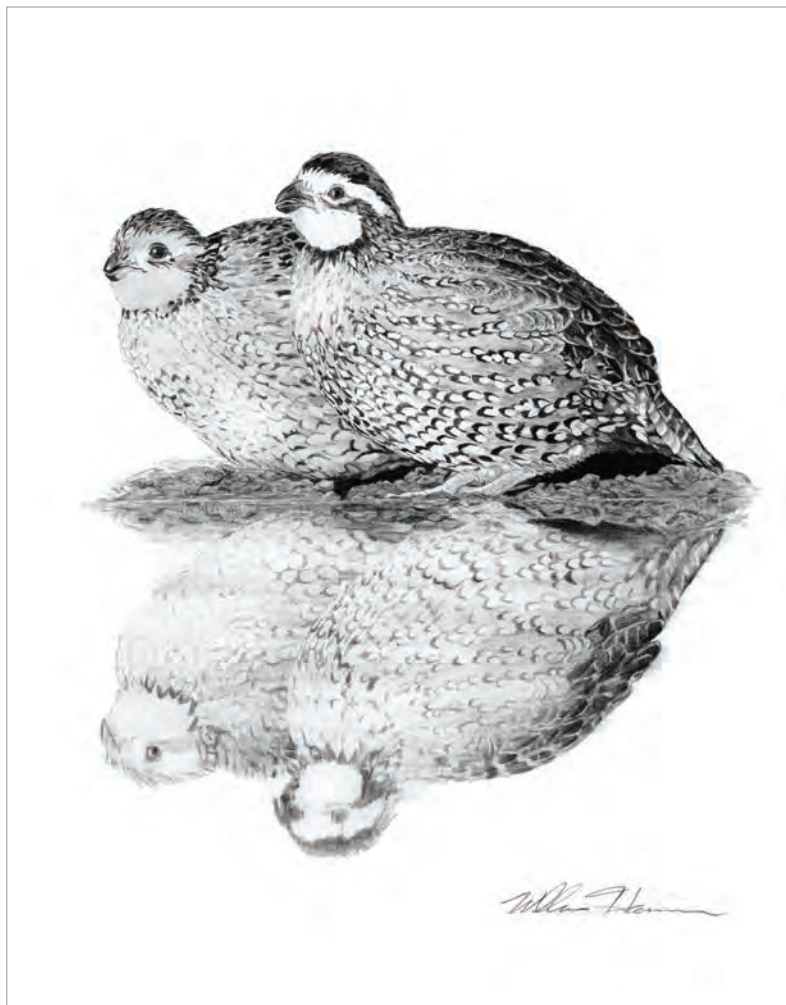


Lisa Gleim

Open Season - pastel on hunting licenses - 15" x 19"



Walter Matia
Outward Bound
bronze with finished walnut base,
Ed. 1/1 - 70" x 19" x 14"



Bill Harrison
Watering Hole II
graphite / carbon pencil
15" x 12"



William Schaldach (1896-1982)

Bobwhite Quail - watercolor - 13 $\frac{3}{4}$ " x 17 $\frac{3}{4}$ " - signed lower right



William Schaldach (1896-1982)
Grouse in the Grapes - watercolor
18" x 13" - signed lower right



Jeff Craven
Closing Day - oil on panel - 9" x 12"



Roger Blum
Tall Grass Rooster - oil on board - 18" x 24"



John Kobald

Early to Rise (Monumental) - bronze, Ed. of 5 - 96" x 54" x 62"

Maquette available - bronze, Edition of 12 - 17" x 11" x 16"



Bucky Bowles
Downfall Covey ~ oil on linen ~ 18" x 24"



John Swan
Grouse Hunters ~ oil on canvas ~ 24" x 36"



Harley Bartlett
A Snap Shot - oil on linen - 18" x 24"



Aiden L. Ripley (1896-1969)

Hunter with Setter, 1937 - watercolor - 15" x 24" - signed lower left



Henry Dutton Morse (1826-1888)
Setter and Quail, 1857 - oil on canvas - 28" x 24" - signed lower right



Chet Reneson

Quail Country - acrylic - 21" x 33" - signed lower left



Chet Reneson

Over Yonder ~ watercolor ~ 18" x 28" ~ signed lower left



Chet Reneson

Early Birds ~ watercolor ~ 18" x 28" ~ signed lower left



Chet Reneson

Hunter in Winter - watercolor - 17 ¼" x 27 ¼" - signed lower left



Rod Crossman
The Return - acrylic on canvas - 20" x 24"



Ewoud de Groot
Pintails III - oil on linen - 43" x 43"



Frank Benson (1862-1951)

Pintails in Flight, 1926 ~ watercolor ~ 14 $\frac{5}{8}$ " x 19 $\frac{7}{8}$ " ~ signed lower left



Richard Bishop (1887-1975)

High Flyers - oil on canvas - 24" x 27" - signed lower right

Full page illustration in Richard Bishop's *The Ways of Wildfowl*, p. 112



Jim Rataczak

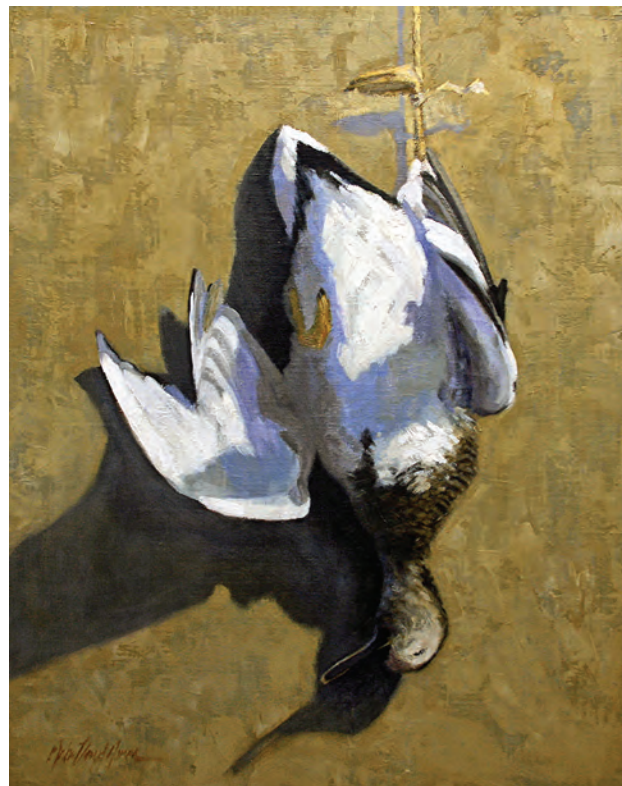
***Ever Watchful** - oil on linen on board - 14" x 18"*



Gary Moss
Timber Mallards - oil on canvas - 24" x 36"



John Jones
Cut'em - oil on board - 14" x 20"



John Jones
Gadwall - oil on board - 20" x 16"



Brett Smith
Gunning the Timber - oil on linen - 16 x 24



David Hagerbaumer (1921-2014)

Ringneck Ducks ~ watercolor ~ 12 $\frac{3}{4}$ " x 16 $\frac{3}{8}$ " ~ signed lower right



Roy Mason (1886-1972)

Hunter in the Reeds - watercolor - 15 1/2" x 21 1/2" - signed lower left



Rod Crossman
Sisters - acrylic on canvas - 12" x 16"



Rod Crossman
Pine Point - acrylic on canvas - 12" x 16"



Julie Jeppsen

All Ears - oil on canvas - 30" x 48"

Gary Lee Price
Alaska
(maquette), bronze
open edition
13" x 12" x 8"

*Also available in a
44" x 30" x 35"
open edition*





Eldridge Hardie (1940-2021)
Pointer Dog - oil on canvas - 20" x 24" - signed lower left



Rebecca Proctor
Flagged - oil on canvas
16" x 12"



Donny Finley
Stone Fly, Rock Creek - oil on panel - 16" x 24"



Walter Brackett (1823-1919)

Brook Trout Still Life ~ oil on canvas ~ 16" x 24" ~ signed lower right



Liz Lewis

The Honest Twenty - bronze, Ed. of 30, walnut base available - 18" x 16" x 11"



Ogden Pleissner (1905-1983)

Salmon Fishing ~ watercolor ~ 14" x 21 1/4" ~ signed lower right

The following works by Henry Hintermeister were painted as a calendar series for the Shaw-Barton Company, an advertising firm based in Coshocton, Ohio.



Henry Hintermeister (1897-1972)

No Fishing - oil on canvas - 21" x 28" - signed lower left



Henry Hinthamer (1897-1972)

Do Not Feed the Bears - oil on canvas - 21" x 28" - signed lower left



Henry Hinthamer (1897-1972)

Fish on the Hook - oil on canvas - 21" x 27 3/4" - signed lower left



Henry Hinthamer (1897-1972)

Sneaking Pie ~ oil on canvas ~ 21" x 28" ~ signed lower left



Henry Hinthamer (1897-1972)

The Catch ~ oil on canvas ~ 21" x 28" ~ signed lower right



Paul Puckett
Top of the Tide ~ oil ~ 20" x 30"



C. Ford Riley
Chasing Reds ~ oil on canvas ~ 24" x 36"



Alan Shuptrine
On a Run - oil on canvas - 18" x 24"

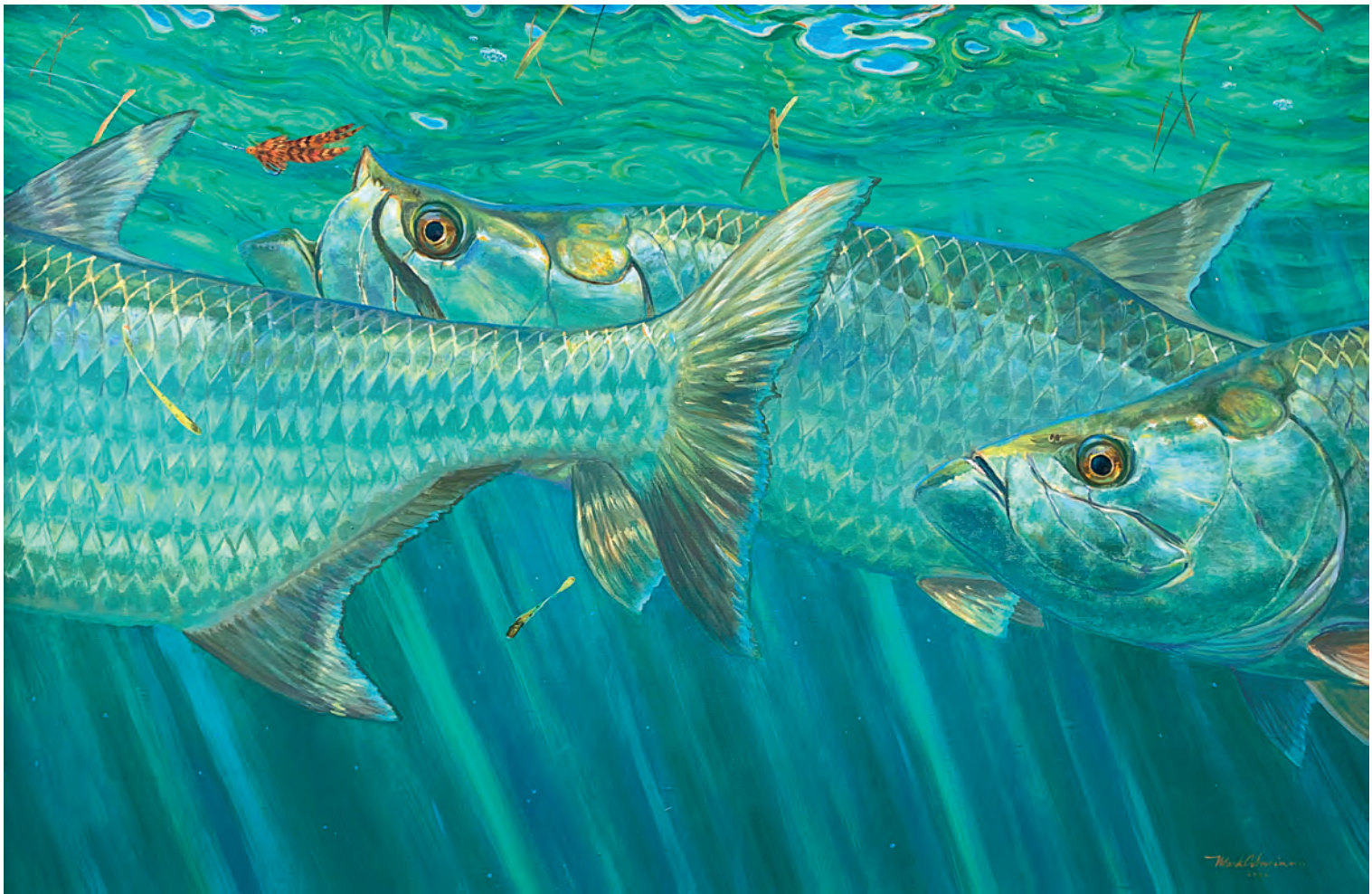


Kent Lemon
Prowling Bone ~ oil on panel ~ 22" x 28"



Mike Stidham

Bright Flat Permit - oil on panel - 24" x 36"



Mark Susinno
Old School - oil on linen - 24" x 36"



Luke Frazier
Morning Alarm ~ oil on board ~ 30" x 36"



David Jackson
Shadows of Winter - oil on canvas - 30" x 40"



William Hays (1830-1875)
Doe with Two Fawn, 1865 - oil on canvas - 8" x 12" - signed lower left



Arthur Fitzwilliam Tait (1819-1905)

On the Alert, 1880 - oil on canvas - 20 $\frac{3}{8}$ " x 30 $\frac{1}{4}$ " - signed lower left



David Jackson
Golden Morning - oil on canvas - 20" x 30"



Ron Kingswood
Refuge ~ oil on canvas ~ 35" x 52"



Andrew Bolam
Tiny Friend
acrylic on canvas
34" x 34"



Andrew Bolam
Interloper
acrylic on canvas
48" x 48"



Nicole Gaitan

Uncle T - acrylic on canvas - 36" x 36"



Grant Hacking
In the Great Acacia ~ oil on canvas ~ 30" x 40"



Michael Barlow
Mama Bear - bronze, Ed. of 21 - 20" x 22" x 14"



Kent Ullberg
Whistleblower
bronze, Ed. of 25
12" x 9" x 9 1/2"



Susan Easton
Tiger Child - acrylic on canvas - 24" x 24"



Susan Easton
Safe Passage - acrylic on canvas - 24" x 24"



Susan Easton
Unmistakable - acrylic on canvas - 40" x 40"



Kenn Backhaus
Return of Spring
oil on canvas
37 $\frac{3}{4}$ " x 29 $\frac{1}{4}$ "



Kenn Backhaus
Trouble Times Four
oil on canvas - 30" x 24"



Vivian Boswell
Soft Morning Light - oil on canvas - 24" x 24"



Laura Adams
The Gathering - paper collage on wrapped canvas with finished edges - 36" x 48"

Michael Albrechtsen
Late Spring Patterns
oil on canvas ~ 30" x 24"





Douglas Aagard

Snow on the Ridge Top - oil on canvas - 36" x 60"



Marilyn Borglum
Hunter in Peacock Blues
acrylic - 40" x 40"



Bill Harrison

Merlin

graphite / carbon pencil

30" x 22"



Alan Shuptrine
Still There - watercolor
27 $\frac{3}{8}$ " x 18 $\frac{15}{16}$ "



Nelson Boren
Flag Shirt
watercolor ~ 56" x 43"
signed lower right



Margaret Augusta Murphy (1908-1991)
At the Piano - oil on canvas - 30" x 24" - signed lower left



Ogden Pleissner (1905-1983)

Costa Caparica - oil on canvas - 24" x 40" - signed lower left



Alfred Hutton (1877-1954)

***Architectural Landscape** - graphite / carbon pencil - 7 $\frac{3}{4}$ " x 9 $\frac{3}{4}$ " - signed lower right*



Alfred Hutton (1877-1954)
St. Philip's Church - watercolor
19" x 14 1/2" - signed lower right

Anna Heyward Taylor (1879-1956)
Charleston House Tops
linocut, Ed. 7 of 32 - 14 1/2" x 10 3/4"
signed lower right





Elizabeth O'Neill Verner (1883-1979)

Marsh Landscape - pastel on panel - 8" x 10" - signed lower left



Patrick Matthews

The Beyond - oil on canvas 40" x 30"

THE
SPORTSMAN'S
GALLERY, LTD.SM
&
PADEREWSKI
fine art

BEAVER CREEK

158 Plaza • P.O. Box 6850
Beaver Creek, Colorado 81620
970-949-6036

CHARLESTON

165 King Street
Charleston, South Carolina 29401
843-727-1224

NASHVILLE

3706 Hillsboro Pike, B
Nashville, Tennessee 37215
615-516-9766

SportsmansGallery.com
PaderewskiFineArt.com
