

THE  
SPORTSMAN'S  
GALLERY, LTD.<sup>SM</sup> & PADEREWSKI  
*fine art*





**Michael Barlow**  
***Last Look***  
bronze, Ed. of 21  
25" x 45" x 9"

**PADEREWSKI FINE ART & THE SPORTSMAN'S GALLERY, LTD.**

BEAVER CREEK • 158 Plaza • P.O. Box 6850 • Beaver Creek, Colorado 81620 • 970-949-6036

CHARLESTON • 165 King Street • Charleston, South Carolina 29401 • 843-727-1224

NASHVILLE • 2120 Crestmoor Road, Suite 2008 • Nashville, TN 37215 • 615-516-9766

FRONT COVER:

**Arthur Fitzwilliam Tait**  
**(1819-1905)**

***Ruffed Grouse***

oil on canvas ~ 14 ¼" x 24"

signed lower right, 1883

---

**SportsmansGallery.com | PaderewskiFineArt.com**



**Kenn Backhaus**  
*Winter Foraging* ~ oil on linen ~ 26" x 26"





Peggy Watkins  
*Dreamers* ~ oil ~ 24" x 30"





**William Hollywood (1923-2007)**  
*Pheasants in Flight* ~ oil on canvas ~ 20" x 30" ~ signed lower left



**Vivian Boswell**  
*Turkey Country* ~ oil on canvas ~ 24" x 24"





**Miguel Angel Moraleda**  
*Chukar Stretching* ~ oil on linen ~ 12" x 16"

William Machen (1832-1911)  
*Quail*  
oil on canvas  
18 ¼" x 14 ¼"  
signed lower right







Aiden L. Ripley (1896-1969)

*Geese at Currituck* ~ watercolor ~ 20" x 29" ~ signed lower left, 1947



Sue Key  
*Good Company* ~ acrylic on linen ~ 21" x 28"





Sue Key  
*Lovey ~ acrylic on linen ~ 18" x 24"*



**Milton Weiler (1910-1974)**

*Setting Out Decoys* ~ watercolor ~ 17 <sup>3</sup>/<sub>4</sub>" x 25" ~ signed lower right





C. Ford Riley  
*Mallards Fly In* ~ oil on canvas ~ 24" x 30"



Gary Lee Price  
*Journey II* ~ bronze, Ed. of 50 ~ 73" x 72" x 46"



Gary Lee Price  
*Red and Gold* ~ bronze, Ed. of 60 ~ 31" x 32" x 21"





Gary Moss  
*County Road Mallards* ~ oil on canvas ~ 24" x 36"



**Francis Jaques (1887-1959)**  
*Mallards Descending*  
oil ~ 32" x 24"  
signed lower right





**Richard Bishop (1887-1975)**  
*Bald Pate Wigeons* ~ oil on canvas ~ 24" x 30" ~ signed lower left, 1948



**Roland Clark (1874-1957)**

*Pintails Coming In* ~ oil on canvas ~ 18" x 24" ~ signed lower right, 1942

The original oil painting from which the Frank Lowe hand-colored aquatint of 1942 was published.





**Roland Clark (1874-1957)**

*Mallards Rising* ~ oil on canvas ~ 18" x 24" ~ signed lower left

The original oil painting from which the Frank Lowe hand-colored aquatint of 1942 was published.





Harry Adamson (1916-2012)  
*Pintails Pitching* ~ oil on canvas ~ 28" x 36" ~ signed lower left





**Roy Mason (1886-1972)**  
*Three Mallards* ~ watercolor ~ 14 ½" x 24 ½" ~ signed lower right

**Ron Kingswood**  
*Vespers*  
oil on canvas  
58" x 55"







**David Hagerbaumer (1921-2014)**  
*Goldeneyes* ~ watercolor ~ 22" x 25" ~ signed lower right



Richard Bishop (1887-1975)  
*"Flooded Timber" Mallards* ~ oil on canvas ~ 24" x 27" ~ signed lower right





Maynard Reece (1920-2020)  
*Texas Bound* ~ oil ~ 24" x 34 ¼" ~ signed lower right



**Roger Blum**  
*Mallards Over a Spring Garden* ~ oil on linen gator board ~ 30" x 40"





David Jackson  
*Sunset Landing* ~ oil on canvas ~ 20" x 30"



Luke Frazier  
*Busting Bob* ~ oil ~ 16" x 16"





Jim Rataczak

*When All the Work Pays Off* ~ oil on linen on board ~ 8" x 16"



Roy Mason (1886-1972)  
*Quail Hunters* ~ watercolor ~ 22" x 30" ~ lower right





Roger Blum  
*Pheasant Flush* ~ oil on linen ~ 10" x 14"



**Bucky Bowles**  
*Coming to the Point* ~ oil on linen ~ 18" x 24"





Calvin Carter

*Morning's First Wave* ~ oil on panel ~ 24" x 30"



**Rod Crossman**  
*Grouse Eyes ~ acrylic on canvas ~ 20" x 24"*





Rod Crossman  
*Chasing Singles* ~ acrylic on canvas ~ 24" x 30"



**Bob Bertram**

*Point Well Made* ~ oil ~ 24" x 30"





**Walter Matia**

*Wild Child* ~ bronze, Ed. of 10 ~ 25" x 23" x 7"



Liz Lewis

*Le Breton* ~ bronze, Ed. of 20 ~ 16" x 5 ½" x 12"





Lou Pasqua  
*Double Team* ~ acrylic ~ 15 ½" x 22 ½"



Robert Abbett (1926-2015)

*Russett Boy of Green Fairways* ~ oil on canvas ~ 24" x 30" ~ signed lower left, 1980



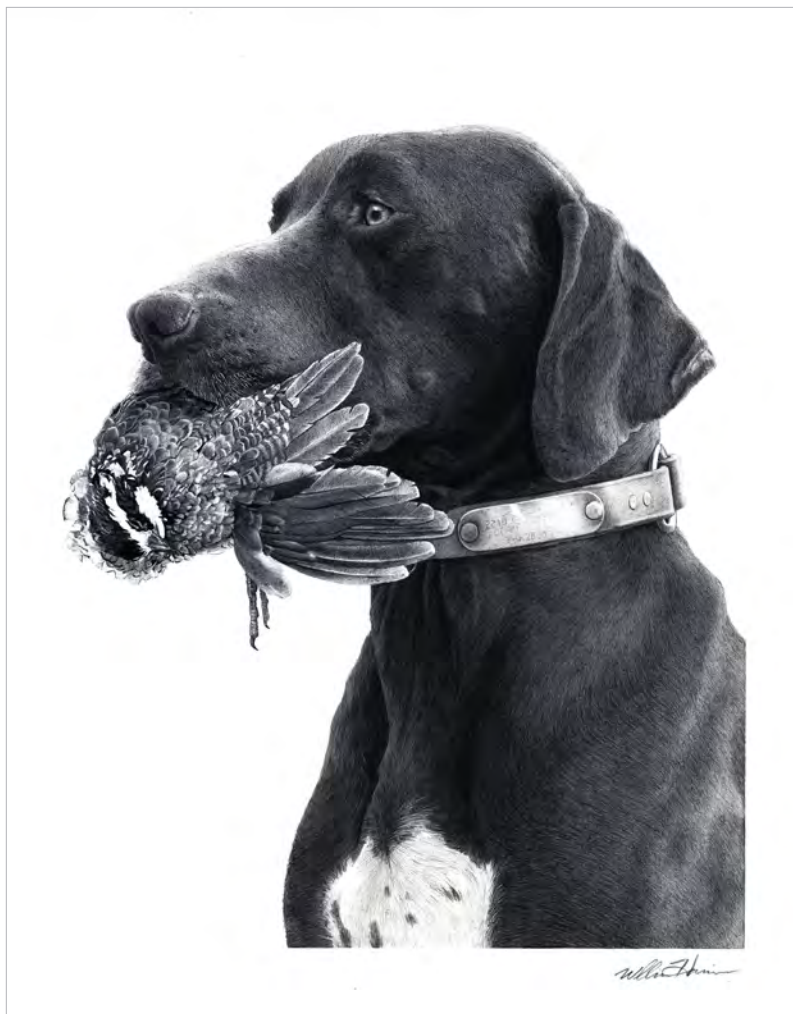


**Louise Peterson**  
*Golden Girl* ~ bronze, Ed. of 9 ~ 20" x 16" x 14"



**Bill Harrison**  
*Ginger with Woodcock*  
 graphite/carbon pencil ~ 20" x 16"





**Bill Harrison**

***Doc***

*graphite/carbon pencil*  
*20" x 16"*



**Julie Jeppsen**  
*On Hold* ~ oil on canvas ~ 20" x 24"





**Brett Smith**

*Fishing the Boulder ~ oil on canvas ~ 20" x 30"*





Eric Sloane (1910-1985)

*Covered Bridge* ~ oil on board ~ 24" x 32" ~ signed lower right





Lisa Gleim

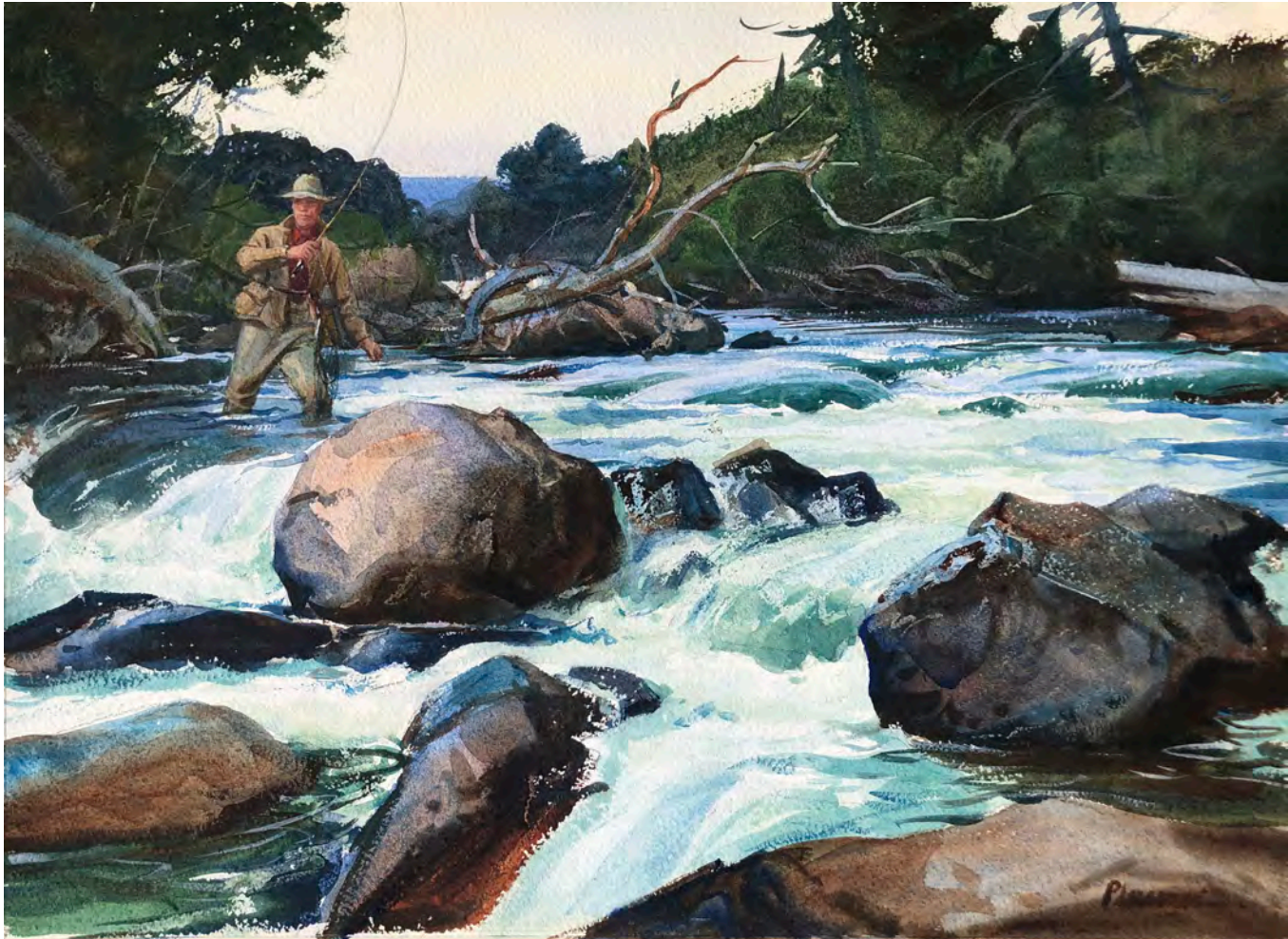
*Rainbow Trout II ~ pastel on fishing ephemera ~ 14" x 24"*



Ogden M. Pleissner (1905-1983)

*Playing One Out* ~ watercolor ~ 15 x 22 ½ ~ signed lower right





Ogden M. Pleissner (1905-1983)  
*Above the Rapids* ~ watercolor ~ 14" x 20 ½" ~ signed lower right





Aiden L. Ripley (1896-1969)

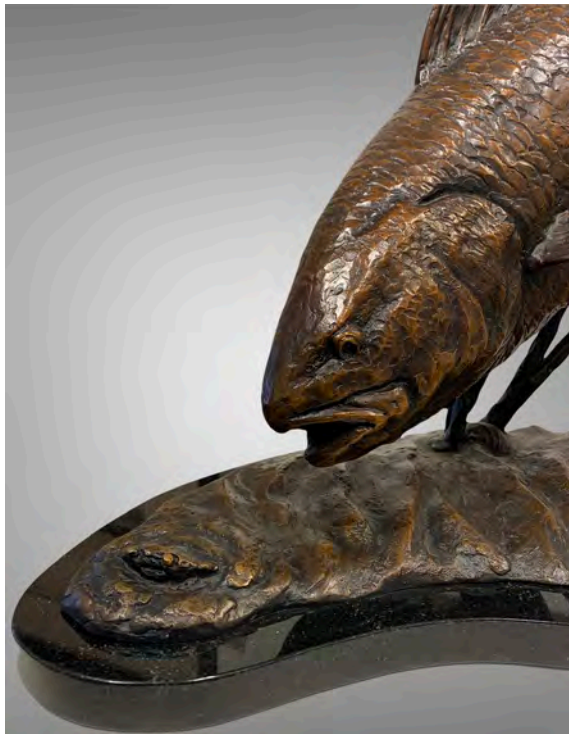
*Long Pool, Rapid River* ~ watercolor ~ 17  $\frac{3}{4}$ " x 29  $\frac{3}{4}$ " ~ signed lower right





**William Schaldach (1896-1982)**

*Leaping Rainbow Trout* ~ watercolor ~ 14  $\frac{3}{4}$ " x 20  $\frac{3}{4}$ " ~ signed lower left



**John Kobald**  
*Mud Grubbing* ~ bronze, Ed. of 19 ~ 26" x 23" x 9"







**John Swan**

*Big Hole River ~ oil on canvas ~ 18" x 24"*

William Schaldach (1896-1982)  
*Northern Pike*  
watercolor ~ 17 ½" x 13 ¾"  
signed lower right







Harley Bartlett  
*Tarpon Strike* ~ oil on canvas ~ 24" x 36"





Paul Puckett

*Bonefishing* ~ oil on canvas ~ 15" x 24"





Mark Susinno  
*Bound to Meet* ~ oil on linen ~ 24" x 36"



**John Jones**  
*Surface Tension* ~ oil on board ~ 20" x 30"





Harley Bartlett  
*Flats Afternoon* ~ oil on canvas ~ 24" x 36"

Frank Stick (1884-1966)  
*Arctic Char*  
oil on canvas  
18" x 12"  
signed lower left







**Kent Lemon**  
*Bone On* ~ oil on board ~ 20" x 30"



Susan Easton  
*High Roller*  
acrylic  
48" x 36"





David Jackson  
*Southern Comfort* ~ oil on canvas ~ 24" x 36"





**Brett Smith**

*In the Clear* ~ oil on panel ~ 20" x 30" ~ signed lower right, 1988





**Grant Hacking**  
*Into the Morning Sun* ~ oil on canvas ~ 24" x 30"



**Kelly Singleton**

***Here Comes Trouble*** ~ oil on canvas ~ 24" x 36"





Kyle Sims  
*Rough and Tough* ~ oil ~ 14" x 18"



**Mick Doellinger**

*Closing In* ~ bronze, Ed. of 22 ~ 7" x 24" x 6"





Mick Doellinger

*Classic with a Twist* ~ bronze, Ed. of 22 ~ 11" x 20" x 7"



**Andrew Bolam**

*Hi, Is Stevie Home? II ~ acrylic on canvas ~ 46" x 46"*





**Lindsay Scott**

*Down to the River* ~ oil on canvas ~ 30" x 36"



Susan Easton  
*Collective Vigilance* ~ acrylic ~ 36" x 36"





**Marilyn Borglum**  
*Of Ancient Descent* ~ acrylic on canvas ~ 48" x 48"



**Lanford Monroe (1950-2000)**  
*Yampa Valley in Spring* ~ oil ~ 18" x 24" ~ signed lower right





**Eleinne Basa**

*Morning Shadows ~ oil on linen ~ 9" x 12"*

Douglas Aagard  
*Light on the Bend*  
oil on canvas  
48" x 36"







Carly Carn  
*Seeking Solitude* ~ oil on canvas ~ 22" x 28"

Patrick Matthews  
*The Aspen Grove – Spring*  
oil on canvas ~ 40" x 30"







**Michael Albrechtsen**  
*I See You* ~ oil on canvas ~ 24" x 30"



**Ron Tinney**  
*Shifting Breeze* ~ oil on canvas ~ 20" x 30"





**Donny Finley**  
*Bay Morning* ~ oil on canvas ~ 12" x 24"



**Kenn Backhaus**

*The Cottonwood Sapling ~ oil on linen ~ 30" x 30"*





Ogden M. Pleissner (1905-1983)

*Honfleur, Low Tide* ~ watercolor ~ 17 ½" x 25 ¾" ~ signed lower left





Jeff Craven  
*Lilacs and Forget Me Nots* ~ gouache ~ 12" x 19"





**Knute Heldner (1877-1952)**

*Moonlight Swamp* ~ oil on canvas ~ 18" x 24" ~ signed lower left



**Jim Mellick**

*Bird Dog* ~ cherry wood with copper trim, wood duck is birch with bronze ~ 28" x 53" x 20"





**Tom Swanston**

*The Longest Way* ~ acrylic and gold on canvas ~ 48" x 60"

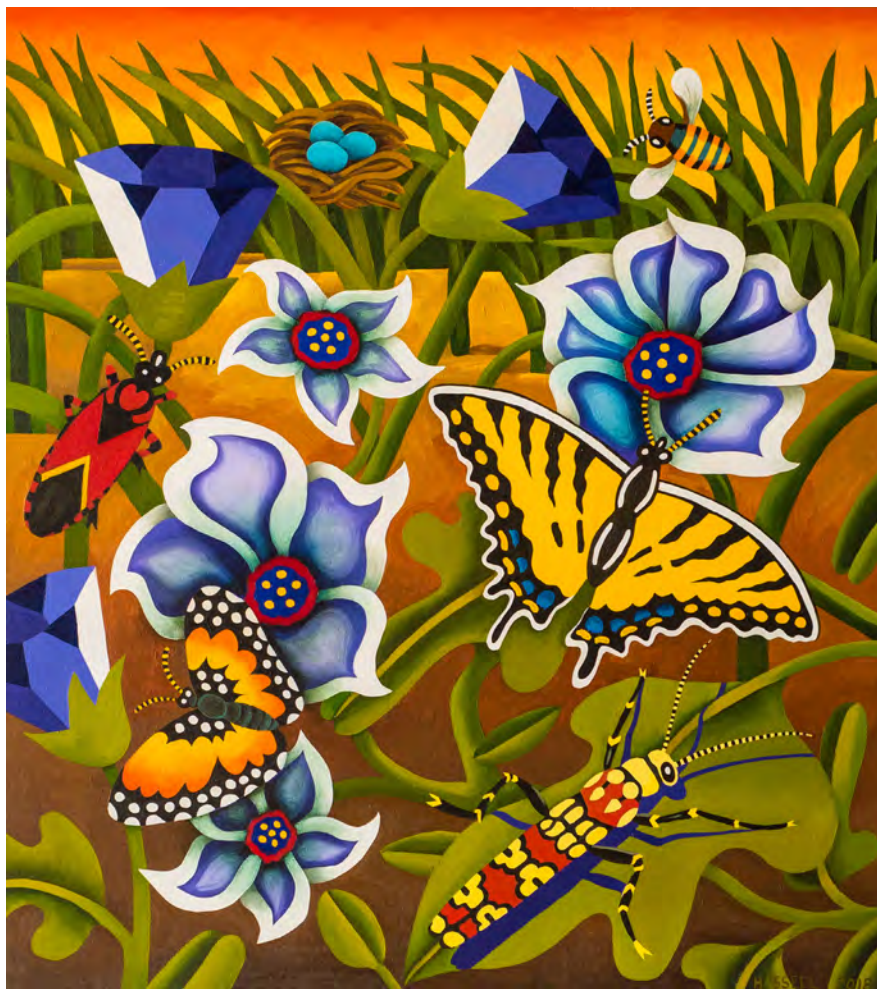


Ewoud de Groot  
*Backlit Pelicans* ~ oil on linen ~ 39 ½" x 51"



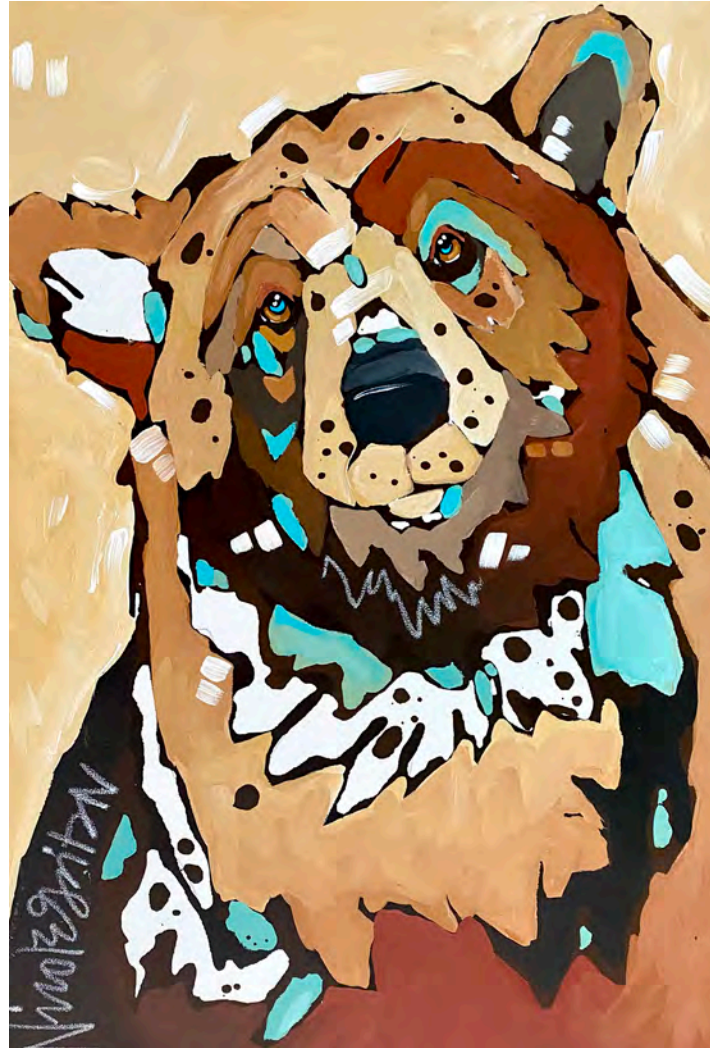


Laura Adams  
*Wood Stork Dance* ~ paper collage on museum wrap canvas ~ 48" x 72"



**Billy Hassell**  
*Meadow* ~ oil on canvas ~ 40" x 36"





Nicole Gaitan  
*Beyond Years* ~ acrylic ~ 36" x 24"



Billy Hassell ~ *Orchard, Oriole, and Peaches* ~ oil on canvas ~ 41" x 36"

THE  
SPORTSMAN'S  
GALLERY, LTD.™  
&  
PADEREWSKI  
*fine art*

BEAVER CREEK  
158 Plaza • P.O. Box 6850  
Beaver Creek, Colorado 81620  
970-949-6036

CHARLESTON  
165 King Street  
Charleston, South Carolina 29401  
843-727-1224

NASHVILLE  
2120 Crestmoor Road, Suite 2008  
Nashville, TN 37215  
615-516-9766

---

SportsmansGallery.com  
PaderewskiFineArt.com

---